

CONTEXT

FALL 2025

GLASS

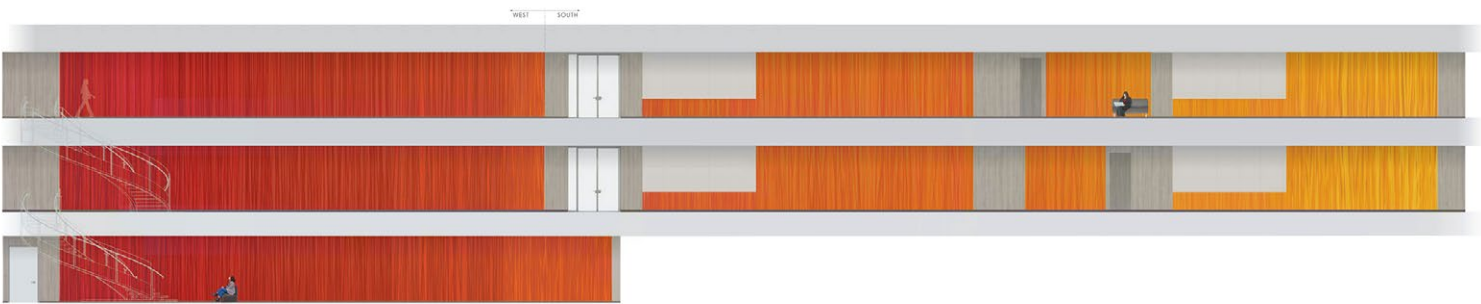
Historic Reflections

Reimagining Glass

New Frontiers

Design Profiles:
Clear Innovations

DESIGN PROFILE
CLEAR INNOVATIONS



PHOTOS: HALKIN MASON PHOTOGRAPHY

WHARTON'S ACADEMIC RESEARCH BUILDING
MGA Partners



The Wharton School at the University of Pennsylvania is a cluster of buildings within the dense urban fabric and landscaped spaces of Penn's campus. The new five-story Academic Research Building has an important presence on Spruce Street across from the "collegiate gothic" towers of the historic Quad, which houses students. In order to unite the wedge-shaped building on the interior and increase its prominence from the adjacent campus

pathways, a vibrant Identity Mural comprised of 140 graphic glass panels was designed. Three layered elements of color — background field, tonal bands, and chromatic strands — transition across the building in a gradient of hue and value. Reaching up three stories, this mural provides intimate detail, defines important common spaces, and emphasizes the transparency of the building as seen from the campus' pedestrian walks.



PROJECT: Academic Research Building
LOCATION: West Philadelphia
CLIENT: University of Pennsylvania's Wharton School
PROJECT SIZE: 6,500 square feet

PROJECT TEAM:
MGA Partners (Architecture)
Ground Reconsidered (Landscape Architecture)
The Lighting Practice (Lighting)
Keast & Hood (Structural Engineering)
Meliora Inc. (Civil Engineering)
Front, Inc. (Façade)
Hunter Roberts Construction Consultants (Construction Management)
H.F. Lenz Company (Company Systems)
McGrory Glass, Inc. (Glass)